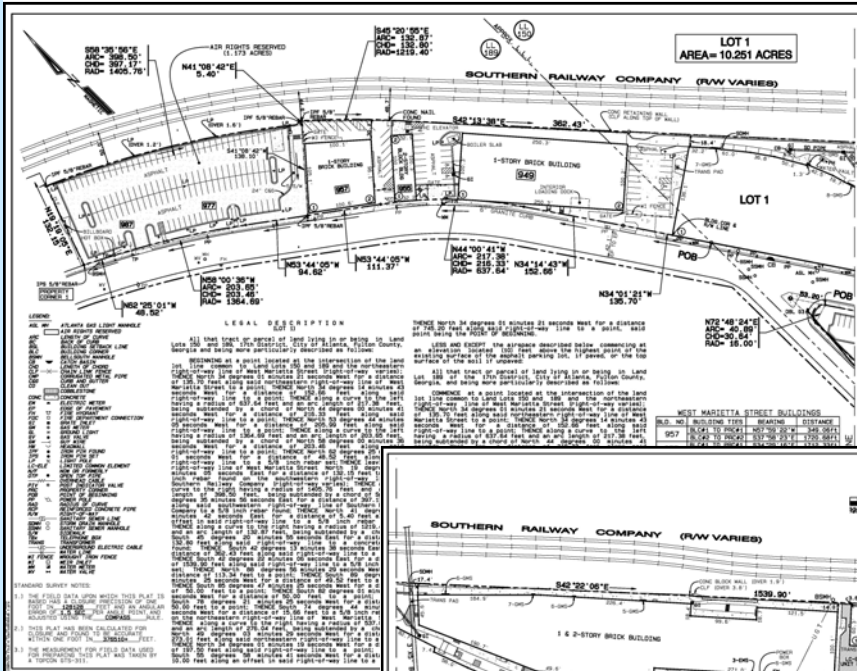




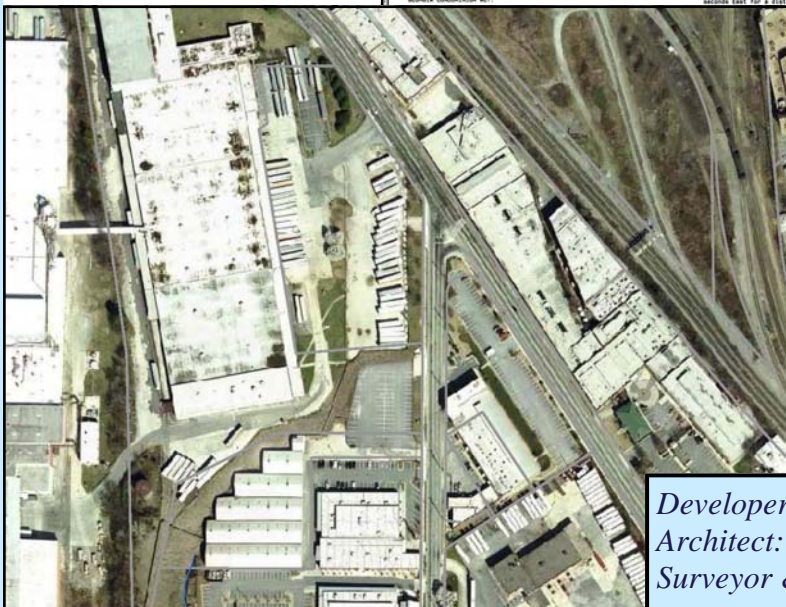
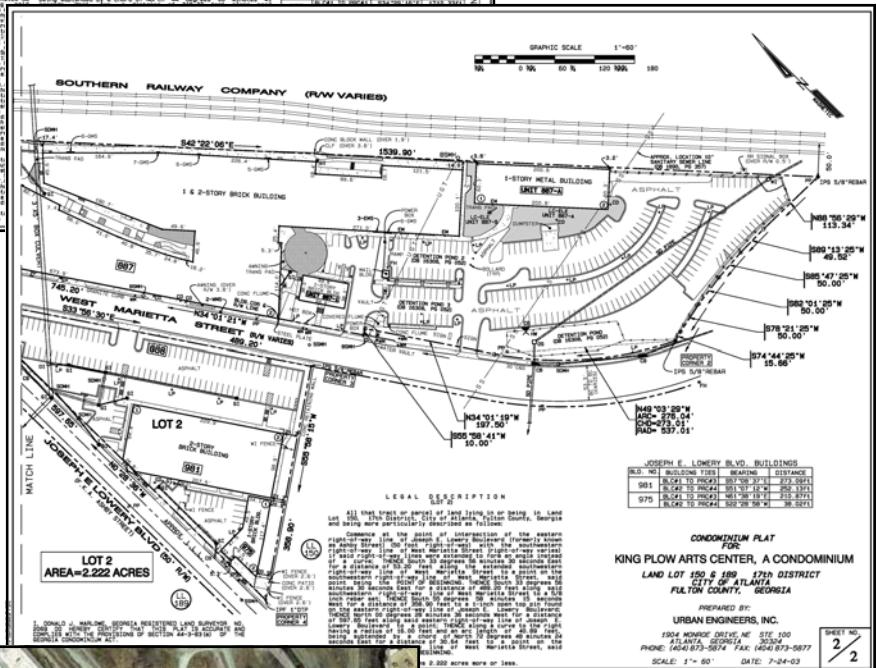
## King Plow Arts Center, A Condominium

URBAN ENGINEERS, INC.



When King Shaw decided to bring the historic King Plow Arts Center into the 21st century, he selected Urban Engineers, Inc. to perform the necessary survey platting and civil design work on the project. The site, originally constructed in the late 1800's, was modified from an antique warehouse facility to modern-day offices complex. At the onset of the project, the site's infrastructure included the original struc-

ture, a small amount of at grade parking, and vacant land. The first step was to consolidate all necessary parcels utilizing the re-platting process at the City of Atlanta, along with the land surveys performed by Urban Engineers, Inc. For the civil design, a field-run topographic survey was created to accurately depict existing conditions, which allows for a more-accurate design of infra-



structures, including parking. Finally, when the desire to convert the buildings into Condominium Office Space, Urban Engineers, Inc. was contracted to assist in this process. With the implementation and recordation of a condominium plat, Urban Engineers, Inc. was able to offer Mr. Shaw the full scope of surveying and engineering services.

Developer : King Plow Arts Center LLC  
Architect: Smith Dalia  
Surveyor & Civil Eng: Urban Engineers, Inc.